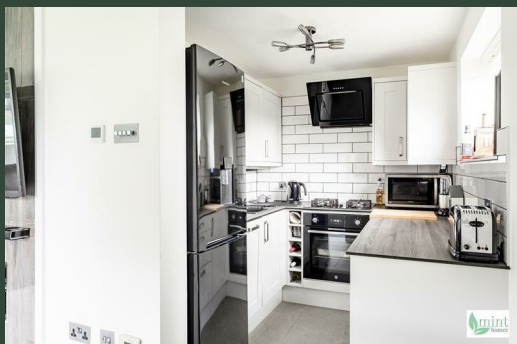
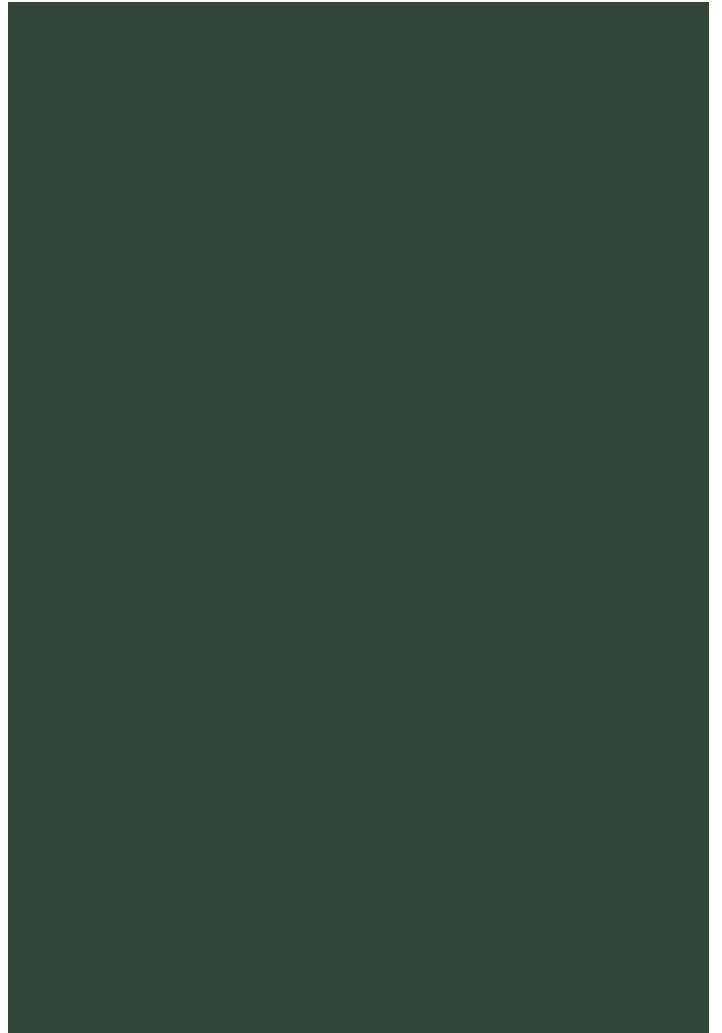
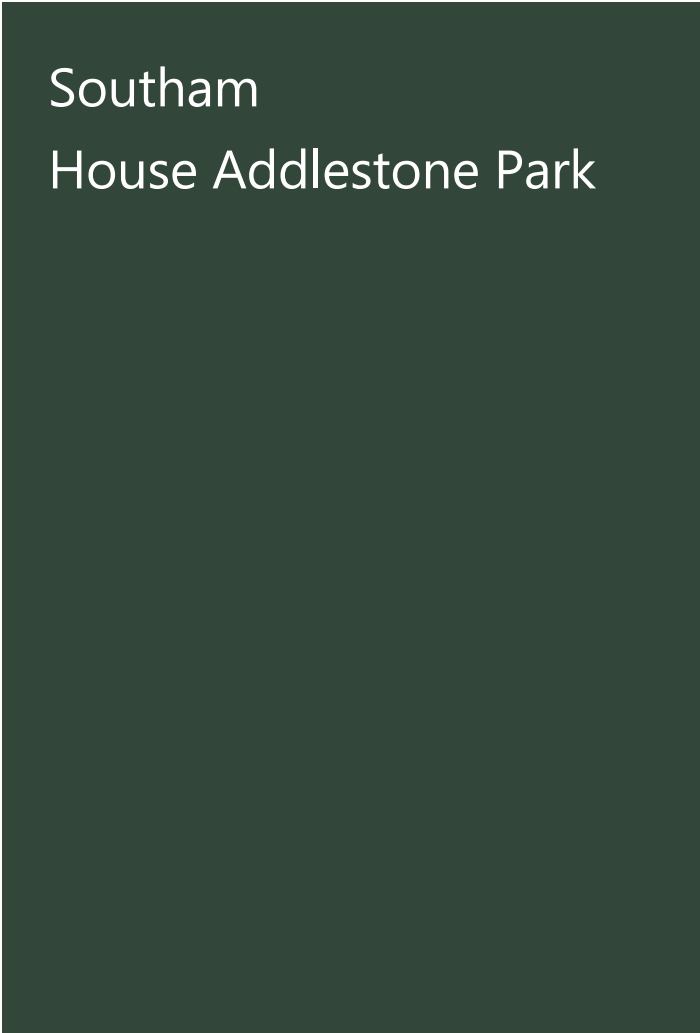


Southam
House Addlestone Park
Addlestone
KT15 1RU





Southam
House Addlestone Park



Local Authority

Runnymede

Council Tax Band

C

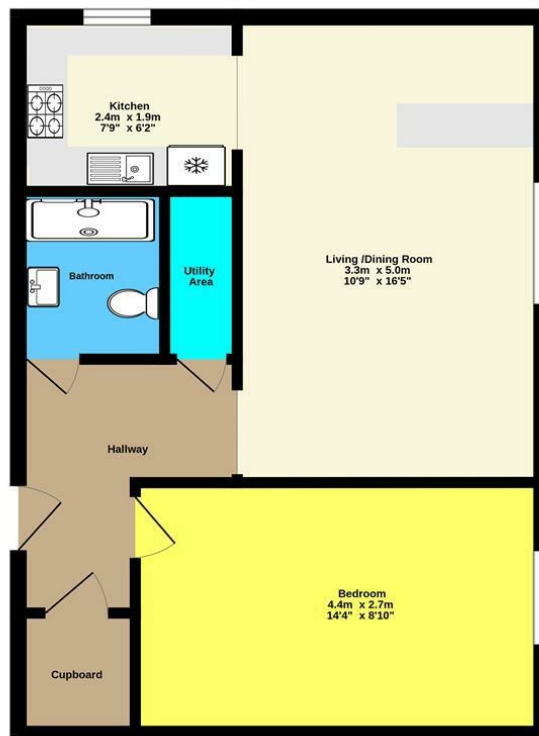
Directions

Energy Efficiency Rating		
	Current	Potential
Very energy efficient - lower running costs		
(92 plus) A		
(81-91) B		
(69-80) C		
(55-68) D		
(39-54) E		
(21-38) F		
(1-20) G		
Not energy efficient - higher running costs		

England & Wales EU Directive 2002/91/EC



Agents Note: Whilst every care has been taken to prepare these particulars, they are for guidance purposes only. All measurements are approximate and are for general guidance purposes only and whilst every care has been taken to ensure their accuracy, they should not be relied upon and potential buyers/tenants are advised to recheck the measurements



Ground Floor Flat
43.3 sq.m. (466 sq.ft.) approx.

Marketed by mint homes Ltd

TOTAL FLOOR AREA : 43.3 sq.m. (466 sq.ft.) approx.

Marketed by mint homes Ltd. Whilst every attempt has been made to ensure the accuracy of the information contained herein, measurements of floors, windows, rooms and any other items are approximate and no responsibility is taken by any error. Prepared by Simon Lee
Made with Metropix ©2026



Mint Homes
14 Nicholas Gardens
Pyrford
Surrey
GU22 8SD



Contact

01932 336177
hello@minthomes.uk
minthomes.uk

